



206c/168 Victoria Road NORTHCOTE VIC

1 1 1

New, large north facing one bedroom apartment overlooking park lands.

Security and modern are the hallmark of this fantastic one bedroom apartment in the heart of it all.

Comprising of security entry, lift access, modern kitchen and bathroom, separate laundry and large living with access to private balcony facing north.

Features include polished timber floors, air conditioning, open plan living, under cover secure parking and more.

Contact Robert on 0412800500 to organise a private inspections.

Price : \$ 380
Building Size : 72 Sqft
View : <https://www.hollandprice.com.au/lease/vic/north/northcote/residential/apartment/2989226>



Robert Sordello
9384 0022

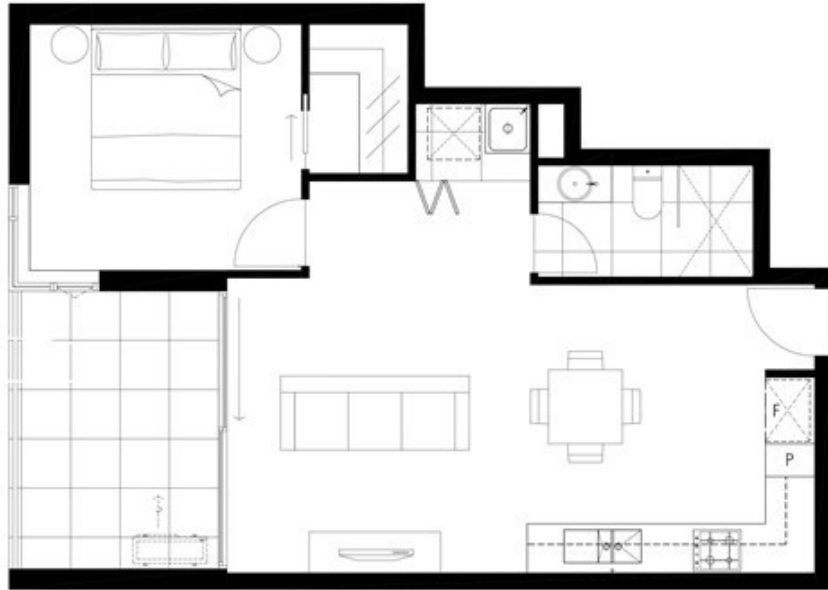


APARTMENT TYPE C2I

APARTMENT NO.
206C

1 BEDROOM

TOTAL AREA	61.9M ²
INTERNAL AREA	52.9M ²
EXTERNAL AREA	9.0M ²



All images, views and diagrams are indicative in nature. Measurements only and have been prepared prior to completion of construction. Dimensions, areas, finishes, fittings and specifications are indicated only and subject to change without notice. Furniture and fittings are not included except where specified in the relevant contract of sale. Submitted floor area is measured to the outside face of all external enclosing walls and to the external face of all window walls and to the perimeter of all inset walls. Purchasers should carefully check the plans and specifications included in the terms of the contract of sale prior to signing.