



**56 Victoria Street BRUNSWICK EAST VIC**

3 1 2

**AUCTION THIS SATURDAY AT 12.00 NOON**

Superb land of 438m2 with WIDE excellent ROW at rear. Ideally suitable for dual occupancy (STCA) and or restoration.

The home it self is more than livable with formal entry 3/4 large bedrooms 2 separate living areas, separate central bathroom, laundry and DOUBLE GARAGE AND WORKSHOP.

features include.high ceiling, large room sizes ,Open fire place.

Ducted heating and ducted cooling ,large family kitchen with informal dining. excellent rear yard and with double garage with workshop from wider than normal right of way at rear.

**Building Size** : 200

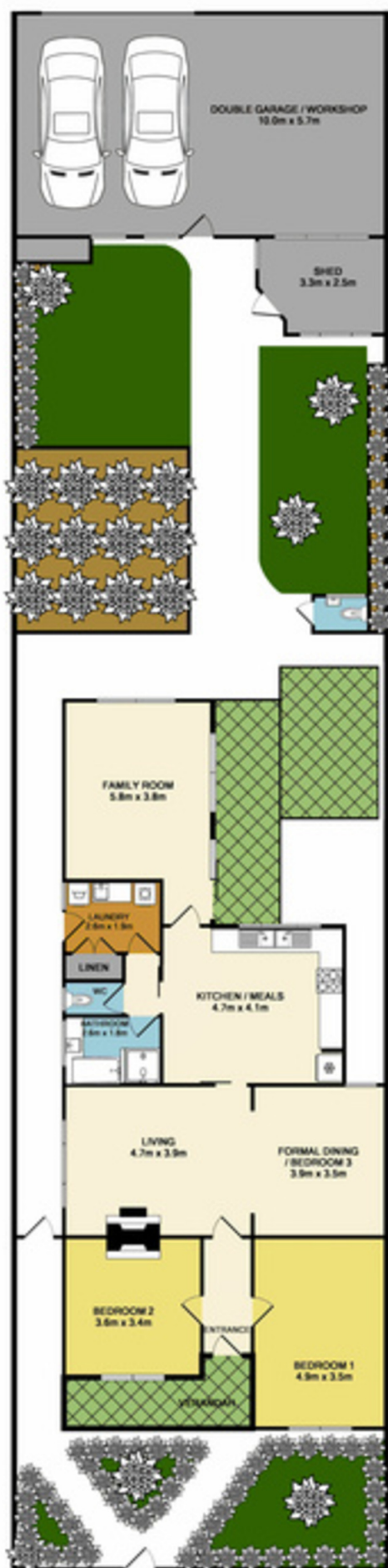
**Land Size** : 438 sqm

**View** : <https://www.hollandprice.com.au/sale/vic/north/brunswick-east/residential/house/3326763>



**Robert Sordello**  
9384 0022

R.O.W



NO 56 VICTORIA STREET EAST BRUNSWICK

While every attempt has been made to ensure the accuracy of the floor plan, compared with measurements of doors, windows, rooms and any other items are approximate and no responsibility is taken for any error, omission, or mis-statement. This plan is for illustrative purposes only and should be used as a guide only for prospective purchase. The services, contents and appearance shown have not been tested and no guarantee as to their operability or efficiency can be given.