



35 Rowe Street ALPHINGTON VIC

3 2 2

This low maintenance three level townhouse with three bedrooms has space and modern style for those who want it all.

Ground floor comprises two large bedrooms with BIRs, central bathroom with laundry allowance plus access to a two tandem car spaces via rear-access roller door. Level 1 is the heart of the home, boasting a large open plan living/dining room with direct access to an entertainers terrace, a gourmet kitchen with loads of bench space and an additional terrace. Upstairs is your own personal retreat with master bedroom with walk in robes, ensuite and two more balconies.

A short stroll away from to Alphington Train Station as well as shops, cafes, and restaurants on Heidelberg Road. Easy access to Station Street Fairfield and Ivanhoe

Price : \$ 2,781

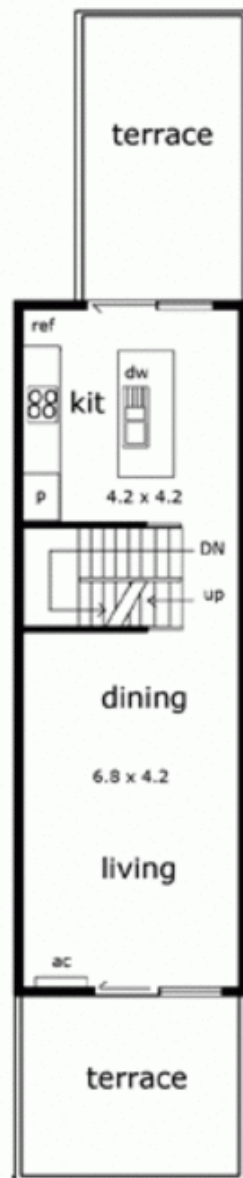
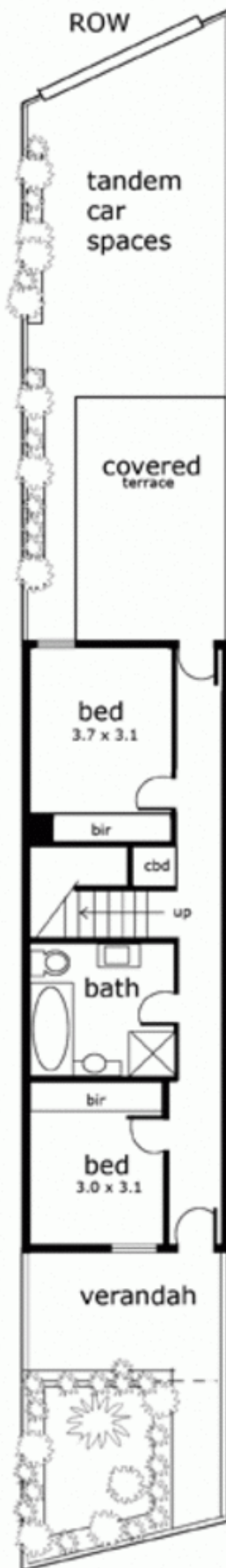
View : <https://www.hollandprice.com.au/lease/vic/north/alphington/residential/townhouse/3849743>



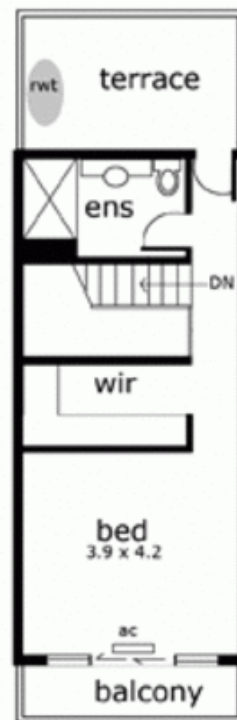
Rita Piraino
03 9384 0022



Brunswick Office
03 9384 0022



FIRST FLOOR



SECOND FLOOR