

2 Sumner Street BRUNSWICK VIC

4 1 4

FOR IMMEDIATE INSPECTION CALL ROBERT ON 0412800500

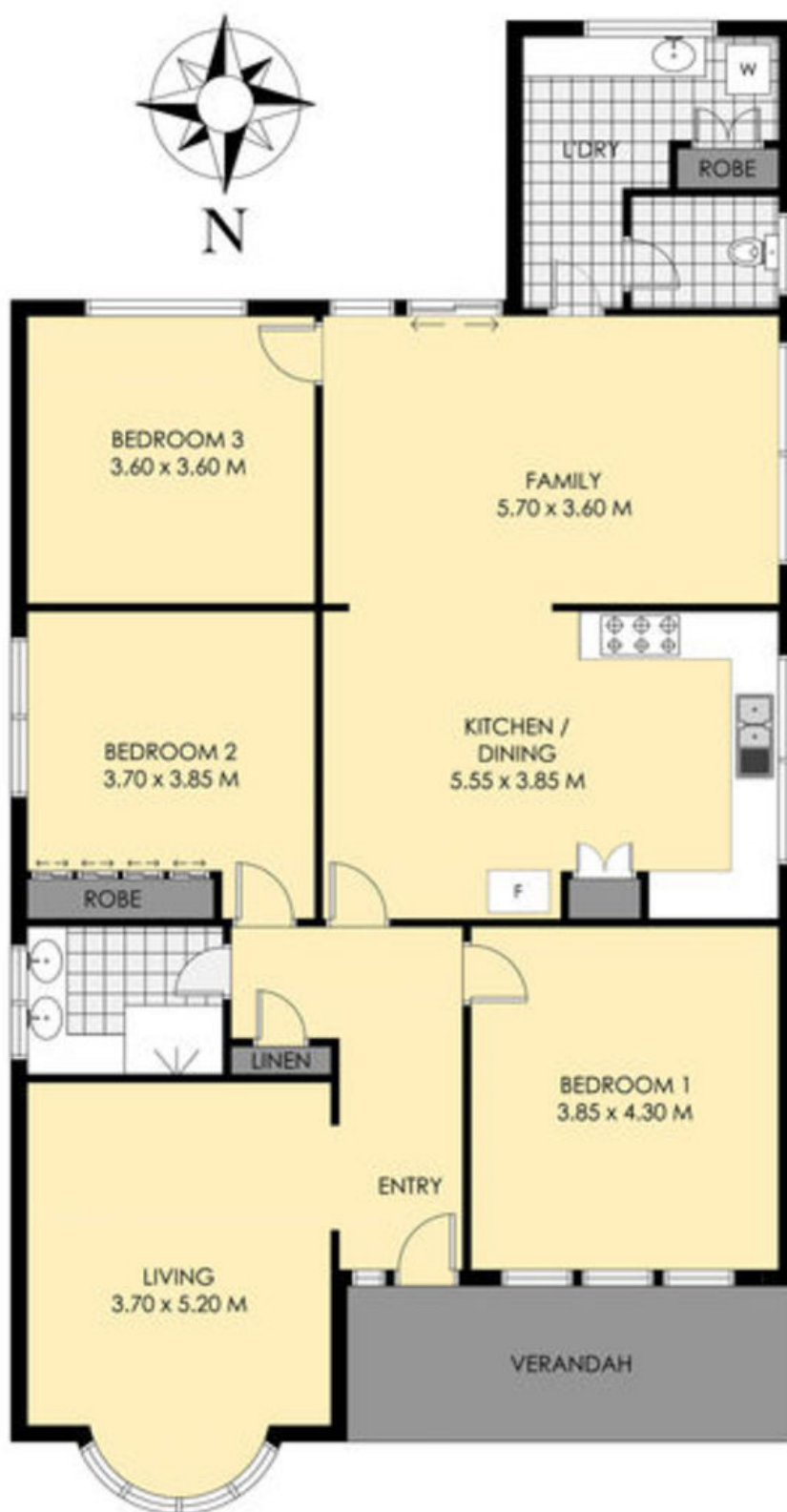
Set in a quiet street this very well presented period Classic has it all, situated on 465 sqm and near Nth Fitzroy border of level land, this double fronted Californian Bungalow is a well-kept family residence. Relax indoors with family in comfort or entertain friends in your private paved garden and back yard.

- ? Flexible floor plan, 4th bed or 2nd living room
- ? Central Bathroom
- ? Large open plan living
- ? Option to keep office/study at rear or restore to garage
- ? Large Entertainers Paved backyard
- ? Polished Baltic pine boards, Lead prism windows & high ceilings

Price : \$ 1,490,000
Building Size : 260 sqm
Land Size : 465 sqm
View : <https://www.hollandprice.com.au/sale/vic/north/brunswick/residential/house/4109032>



Robert Sordello
9384 0022



2 Sumner Street Brunswick East

Whilst every attempt has been made to ensure the accuracy of the floor plan contained here, measurements of doors, windows, rooms and any other items are approximate and no responsibility is taken for any error, omission, or mis-statement. This plan is for illustrative purposes only and should be used as such by any prospective purchaser. The services, systems and appliances shown have not been tested and no guarantee as to their operability or efficiency can be given.