



23 Hillside Avenue NORTHCOTE VIC

4 2 2

This perfectly positioned period home in quite semi cul-des-sac, has it all.

Set on land of approx 570 m2 with ROW at rear and Ruby Reserve at the end of the street, this superbly maintained Art Deco home has a flexible floor plan that accommodates large entry vestibule, 3/4 bedrooms, two bathrooms, main bedroom with ensuite, formal lounge and formal dining .

Also included an updated timber kitchen, opposite a huge open plan living area opening out onto large under cover entertaining deck and garden.

Features include superb lead light windows and doors, ornate ceilings, original timber stained doors, architraves, picture rails and skirtings.

Alabaster period lights, gas appliances, dishwasher, gas ducted heating, airconditioning off st parking for 2

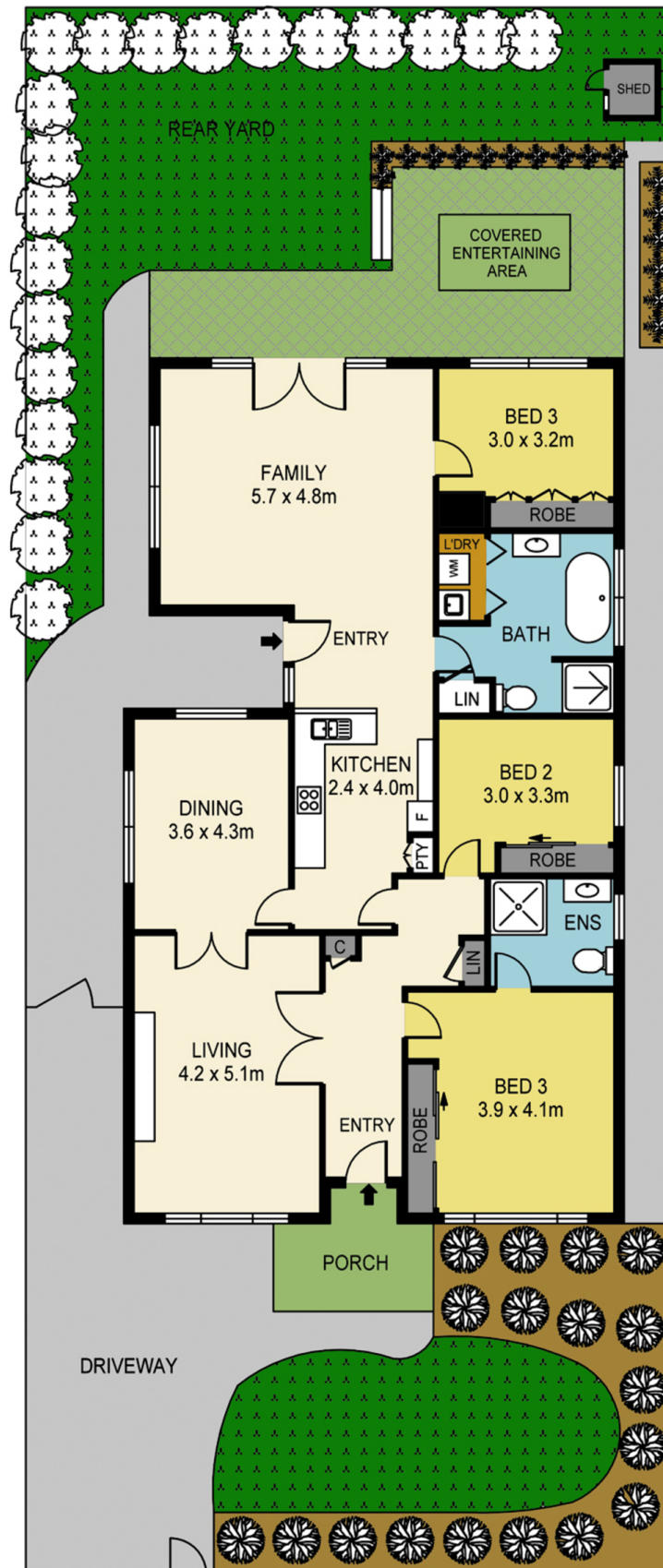
Type : House
Building Size : 240
Land Size : 569 sqm
View : <https://www.hollandprice.com.au/sale/vic/north/northcote/residential/house/4492730>



Robert Sordello
9384 0022

[For full version visit the website](https://www.hollandprice.com.au)

R.O.W



23 HILLSIDE AVENUE, NORTHCOTE

DISCLAIMER

PLANS SHOWN ARE FOR MARKETING PURPOSES ONLY, ALL DIMENSIONS ARE APPROXIMATE AND NOT TO SCALE. THEY ARE SUBJECT TO ERRORS AND INACCURACIES AND NO LIABILITY WILL BE ACCEPTED. INTERESTED PARTIES SHOULD MAKE THEIR OWN INQUIRES.