

8/853 High Street PRESTON VIC

2  2  1 

CALL ROBERT ON 0412 800500 for IMMEDIATE INSPECTION
SITUATED ON THE CORNER OF CRAWLEY ST AND HIGH ST PRESTON/REGENT.
This near new modern townhouse with own street frontage.
AVAILABLE AS OF 18th MAY, 12 MONTH LEASE PREFERRED

Price : \$ 480
Building Size : 180 sqm
View : <https://www.hollandprice.com.au/lease/vic/north/preston/residential/townhouse/4699562>

Comprising of 2 bedrooms, 2 bathrooms and 2 living areas.

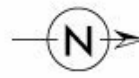
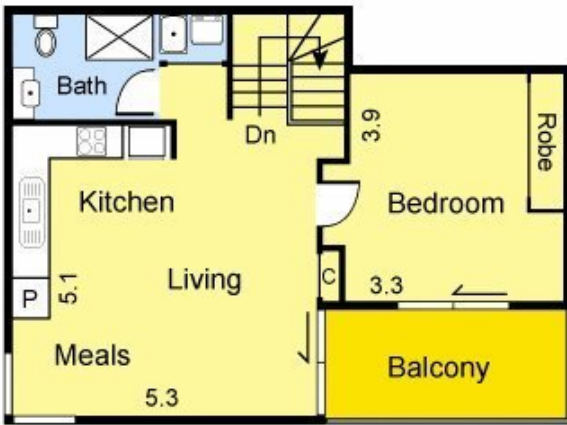
Outstanding finishes and fixtures from solid oak floors, stone benches, stainless steel appliances, air-conditioning and lock up garage.

Perfectly positioned close to Regent Station, bus at front door, Preston Market and High Street Café precinct.

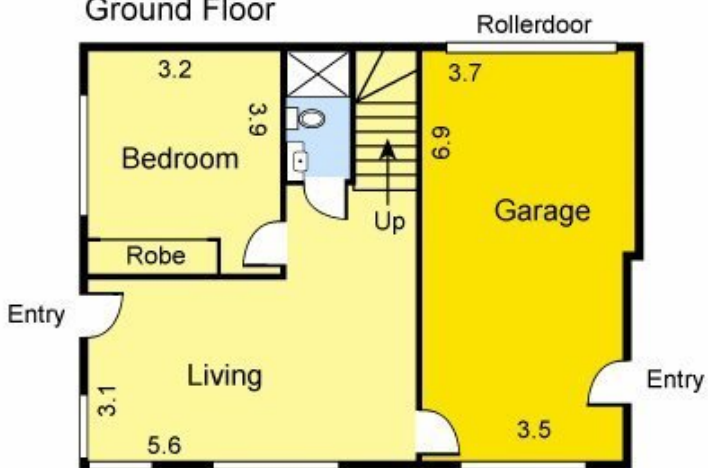


Robert Sordello
9384 0022

First Floor



Ground Floor



Ground Floor - Optional Floor plan

