



1505/9 Power Street SOUTHBANK VIC

2 2 1

Imagine this - one of the finest City skyline and Yarra river views from just about every angle is complemented by this luxurious residence located within the Prima Pearl Tower development just a hop, skip and jump from all your entertainment desires.

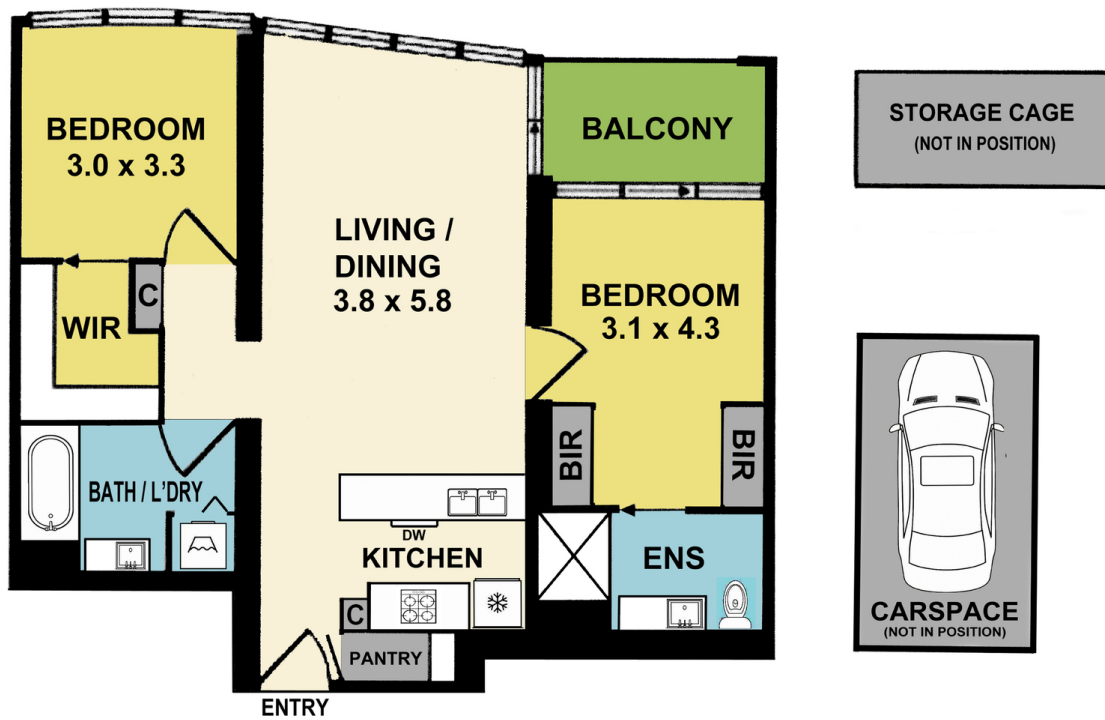
This thoughtfully designed floor plan incorporates a huge open concept living with designer kitchen boasting stone benches complimented by high gloss and light timber cabinetry, 2 spacious bedrooms, the master having its own en-suite with walk in shower and double mirrored BIR's, as well as its own balcony access. A large gleaming central bathroom with Euro Laundry services the 2nd bedroom with its massive Walk in Robe.

Adding to the comfort are features such as: loads of extra storage including a substantial walk in pantry, beautiful high

View : <https://www.hollandprice.com.au/sale/vic/inner-city/southbank/residential/apartment/4922303>



Jim Dandris
9384 0022



APARTMENT 1505 NO.9 POWER STREET SOUTHBANK

Whilst every attempt has been made to ensure the accuracy of the floor plan contained here, measurements of doors, windows, rooms and any other items are approximate and no responsibility is taken for any error, omission, or mis-statement. This plan is for illustrative purposes only and should be used as such by any prospective purchaser. The services, systems and appliances shown have not been tested and no guarantee as to their operability or efficiency can be given.