

## 225/8 Lygon Street BRUNSWICK VIC

1 1 1

Perfectly placed on the Carlton - Brunswick East border 8 Lygon is positioned to impress.

This one bedroom plus one study apartment is perfect to work from home. The apartment is stylish and modern with immediate access to a vast range of cafes, restaurants and bars.

Comprising open plan kitchen/living, bedroom with built in mirrored robes, study, modern bathroom with Euro laundry and secure parking for one car.

Features Include:

- Kitchen with gas stainless steel appliances and integrated dishwasher
- Floorboards in the main living areas
- Split system heating and cooling
- European laundry

**Price** : \$ 400

**View** : <https://www.hollandprice.com.au/lease/vic/north/brunswick/residential/apartment/5992522>



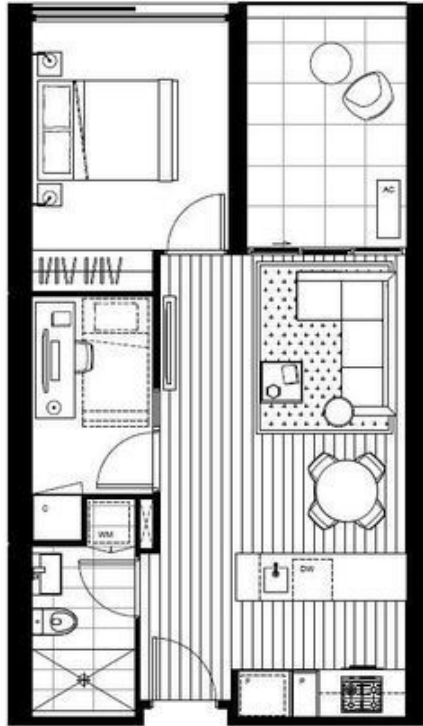
**Rita Piraino**  
03 9384 0022

APT: 1.26, 1.27\*, 1.28, 2.25, 2.26\*, 2.27, 3.25,  
3.26\*, 3.27, 4.23\*, 4.24

Total Area	61.0 m <sup>2</sup>
Int. Area	52.0 m <sup>2</sup>
Ext. Area	9.0 m <sup>2</sup>

APT: 5.17, 6.17, 7.17, 8.12

Total Area	60.0 m <sup>2</sup>
Int. Area	55.5 m <sup>2</sup>
Ext. Area	8.5 m <sup>2</sup>



# 8

## LYGON

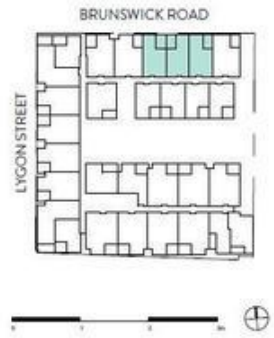
CARLTON - BRUNSWICK

---

**TYPE 12A**

1 BEDROOM  
1 BATHROOM  
1 STUDY

Levels of windows may differ. Refer to level floor plans for location.  
Furniture plan is proposed.



Disclaimer: This floor plan is indicative only. Changes may be made during development and construction. All dimensions are subject to change and are subject to the approval of the Council of State. The furniture depicted is for illustrative purposes only and does not constitute an offer or indicate the final position of furniture items. The construction plans and the floor schedule necessary for work and structure are not shown. The floor plan is intended for use as a guide only and should not be used as a basis for construction. All dimensions are subject to the approval of the Council of State. The furniture depicted is for illustrative purposes only and does not constitute an offer or indicate the final position of furniture items. The construction plans and the floor schedule necessary for work and structure are not shown. The floor plan is intended for use as a guide only and should not be used as a basis for construction.