



10 Leopold Street MARIBYRNONG VIC

2 1 3

Offering an impressive 20 meter frontage with a total land area of 866 square meters what an impressive new home site

In a prime location with tranquil river and parklands settings this brick veneer residence offers endless opportunities simply move in now, renovate and extend or what a perfect future new home site.

The residence is a very clean property offering entry hallway to two good size bedrooms a formal loungeroom through to an open plan kitchen dining living area with separate bathroom and laundry facilities.

An opportunity not to be missed arrange an inspections

[For full version visit the website](https://www.hollandprice.com.au/sale/vic/north/maribyrnong/residential/house/6831705)

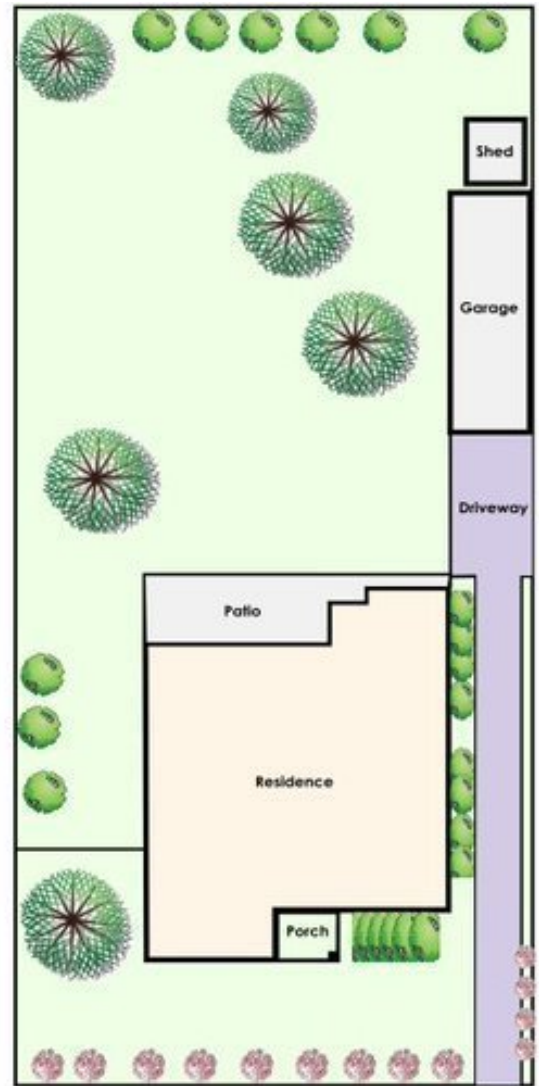
Type : House
Land Size : 866 sqm
View : <https://www.hollandprice.com.au/sale/vic/north/maribyrnong/residential/house/6831705>



Luciano Deodato
9384 0022



Jim Dandris
9384 0022



This floorplan is intended as a guide only. All measurements are approximate. Anyone using this information should rely on their own enquiries.

10 Leopold St, Maribyrnong