



5 Elmore Street Norlane VIC

8 2 4

This amazing double story home sits on approx 610sqm of land and can be looked at from many different vantage points. Whether you are looking at a large home for an extended family, 2 separate residences each with its own entrance, a home for yourself and a rental or simply rent out both levels as is the current situation returning \$730 per week on a month-to-month basis.

Comprising of 8 bedrooms, 2 kitchens (gas cooking), 2 bathrooms, 2 lounge areas, 2 laundries and enough space for 4 cars, you will be astonished at the sheer size and accommodation on offer.

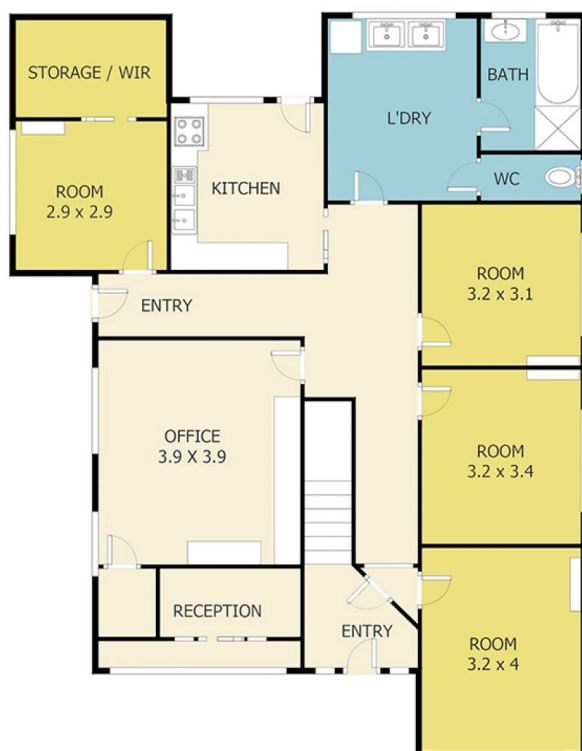
Other features include gas boiler heater for heating throughout, 3 A/Con split systems, 1 A/C and heating system, covered BBQ area and gazebo, a basketball area for the kids, wheelchair rear access ramp, instantaneous gas hot water, separate level alarm and fire alarm both with monitoring, water sprinklers throughout, fire

Land Size : 610 sqm

View : <https://www.hollandprice.com.au/sale/vic/geelong-district/norlane/residential/house/7802715>



Jim Dandris
9384 0022



Scale in meters. Indicative only. Dimensions are approximate. All information contained here in is gathered from sources we believe to be reliable. However, we cannot guarantee its accuracy and interested persons should rely on their own enquiries.

NO.5 ELMORE STREET NORELANE