



7/160-162 Weston Street Brunswick East VIC

2 1 1

Indulge in the sophistication of double-level living at 160-162 Weston Street, Brunswick East. This elegant 2-bedroom apartment is designed for comfort and style with a unique layout that separates the living area from the bedrooms. Two well-appointed bedrooms featuring split system heating/cooling for personalised comfort. The living area is complete with floorboards and a modern kitchen boasting high-quality appliances.

Enjoy the distinction of this thoughtfully designed apartment, offering privacy and functionality. Outside, discover an inviting outdoor space perfect for relaxation and al fresco dining. Your peace of mind is guaranteed with FOB access securing the building, and two garage parking spaces providing ample room for your vehicles.

Type : Apartment

View : <https://www.hollandprice.com.au/lease/vic/north/brunswick-east/residential/apartment/7930164>

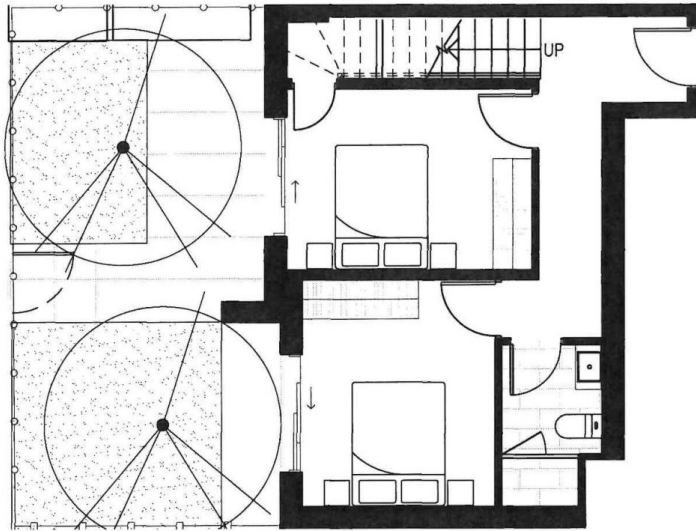


James Akil
9384 0022

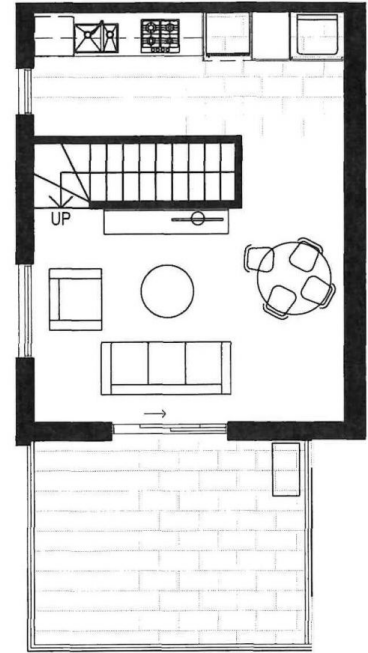


Carl De Sanctis
9384 0022

[For full version visit the website](https://www.hollandprice.com.au)

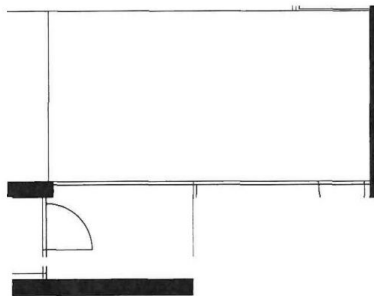


GROUND LEVEL



FIRST LEVEL

FLOOR PLAN



TYPICAL CARPARK (NOT IN POSITION)



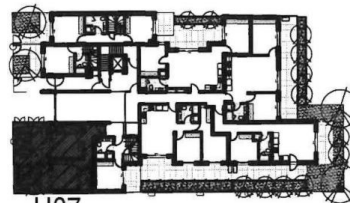
LIST OF INCLUSIONS

- HEATING / COOLING
- SECURED LIFT ACCESS
- FIRE SPRINKLERS
- SECURED ACCESS TO EACH FLOOR
- FLOOR FINISHES:
 - HYBRID TIMBER FLOORS
 - TILES IN KITCHEN AREA
- INTERCOM / DISPLAY
- NBN AVAILABILITY
- ELECTRICAL APPLIANCES
 - OVEN
 - HOTPLATE
 - RANGE HOOD
 - DISHWASHER
- STORAGE CAGE IN BASEMENT

UNIT: 07
2 BEDROOM

ISSUE DATE - AUGUST 2023

	SQ.M.
UNIT AREA:	78.1
P.O.S AREA:	40.5
TOTAL UNIT AREA:	118.6



U07
GR. FLOOR LOCALITY PLAN



UDA STUDIO WWW.URBANDESIGN.COM.AU

The information contained in this publication is believed to be correct, but is not guaranteed. Drawings of rooms and contents are for information only. All areas and dimensions are approximate only. Details may be amended as required by authorities and structural or services requirements. Visual and descriptive representations should not be relied on as being accurate in relation to the final product. Prospective purchasers must rely on their own enquiries to satisfy themselves on all aspects of the development.