



**12/160-162 Weston Street Brunswick East VIC**

2 1 1

Discover the charm of single-level living at 160-162 Weston Street, Brunswick East. This delightful 2-bedroom, 1-bathroom apartment offers a harmonious blend of comfort and style. Step inside to a warm and inviting space adorned with floorboards, leading to a private outdoor area that serves as your personal retreat. The apartment features split system heating/cooling in both bedrooms, ensuring a cosy atmosphere year-round. Convenience meets elegance with a well-appointed bathroom and a modern kitchen equipped with high-quality appliances.

Nestled in the heart of Brunswick East, this apartment provides easy access to a range of local amenities. Immerse yourself in the local culinary scene with charming cafes and restaurants just moments away. Enjoy the convenience of nearby parks for leisurely strolls or outdoor activities. Everyday essentials are at your fingertips, with

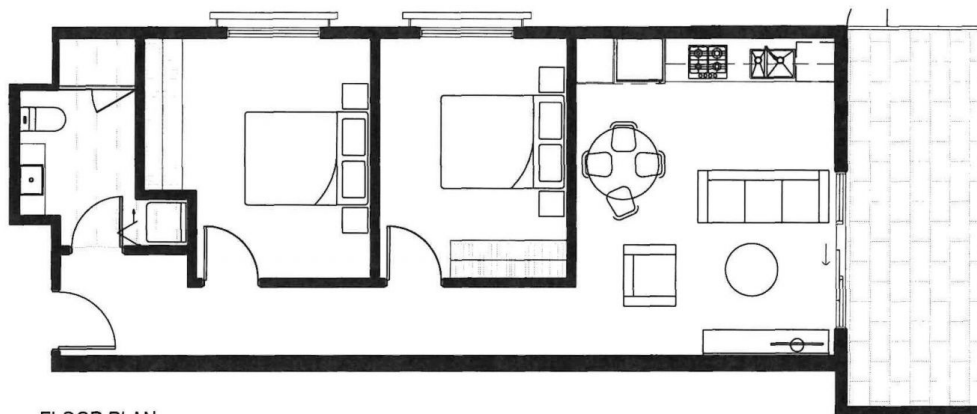
**View :** <https://www.hollandprice.com.au/lease/vic/north/brunswick-east/residential/apartment/7945837>



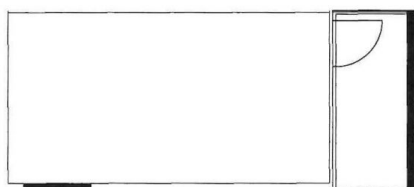
**Carl De Sanctis**  
9384 0022



**James Akil**  
9384 0022



FLOOR PLAN



TYPICAL CARPARK (NOT IN POSITION)



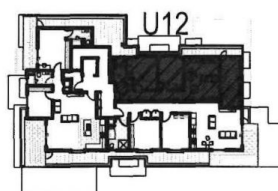
**LIST OF INCLUSIONS**

- HEATING / COOLING
- SECURED LIFT ACCESS
- FIRE SPRINKLERS
- SECURED ACCESS TO EACH FLOOR
- FLOOR FINISHES:
  - HYBRID TIMBER FLOORS
- INTERCOM / DISPLAY
- NBN AVAILABILITY
- ELECTRICAL APPLIANCES
  - OVEN
  - HOTPLATE
  - RANGE HOOD
  - DISHWASHER
- STORAGE CAGE IN BASEMENT

**UNIT: 12**  
2 BEDROOM

ISSUE DATE - AUGUST 2023

	SQ.M.
UNIT AREA:	64.0
P.O.S AREA:	10.4
TOTAL UNIT AREA:	74.4



2ND FLOOR LOCALITY PLAN



**UD** 

UDA STUDIO WWW.URBANDESIGN.COM.AU

The information contained in this publication is believed to be correct, but is not guaranteed. Drawings of rooms and contents are for information only. All areas and dimensions are approximate only. Details may be amended as required by authorities and structural or services requirements. Visual and descriptive representations should not be relied on as being accurate in relation to the final product. Prospective purchasers must rely on their own enquiries to satisfy themselves on all aspects of the development.